

For children and teenagers with B-cell precursor ALL<sup>1</sup>

# Taking the next step with BLINCYTO<sup>®</sup>

A guide for caregivers and their children



## WHAT IS BLINCYTO<sup>®</sup> (blinatumomab)?

BLINCYTO<sup>®</sup> is a prescription medicine used to treat adults and children with:

- B-cell precursor acute lymphoblastic leukemia (ALL) in remission when only a small number of cancer cells remain in the body (minimal residual disease)
- B-cell precursor ALL that has come back or did not respond to previous treatments

ALL is a cancer of the blood in which a particular kind of white blood cell is growing out of control.

## IMPORTANT SAFETY INFORMATION

What is the most important information I should know about BLINCYTO<sup>®</sup>?

- Call your health care provider or get emergency medical help right away if you get any of the symptoms listed below:
  - BLINCYTO<sup>®</sup> may cause serious side effects that can be severe, life-threatening, or lead to death, including:
    - **Cytokine Release Syndrome (CRS) and infusion reactions.** Symptoms of CRS and infusion reactions may include: fever, tiredness or weakness, dizziness, headache, low blood pressure, nausea, vomiting, chills, face swelling, wheezing or trouble breathing, and skin rash.

Please see additional Important Safety Information, including **Boxed WARNINGS**, for BLINCYTO<sup>®</sup> on pages 13–14.

ALL, acute lymphoblastic leukemia.

 **BLINCYTO**  
(blinatumomab) for injection  
35 mcg single-dose vial



## Table of contents

- 3 What is acute lymphoblastic leukemia (ALL)?
- 4 What is BLINCYTO®?
- 5 BLINCYTO® can help those who have MRD
- 6 BLINCYTO® can help children with ALL
- 7 How your child will receive BLINCYTO®
- 8 What to expect when your child starts BLINCYTO®
- 8 Receiving BLINCYTO® at home
- 9 Possible side effects
- 10 Resources for you and your child
- 11 Amgen SupportPlus
- 11 Your care team
- 12 Talking together about BLINCYTO®
- 13 Important safety information
- 15 Glossary



## What is acute lymphoblastic leukemia (ALL)?

ALL is a type of cancer of the blood and bone marrow that affects white blood cells. These white blood cells are important to your immune system because they play a role in helping your body fight infection and disease. But when you have ALL, the bone marrow makes too many of these white blood cells and they do not work properly.<sup>2,3</sup>

### What happens when ALL is treated?

After being treated for ALL, a few different things can happen:

- Children may achieve **remission**. This means that all signs and symptoms of cancer have decreased or disappeared<sup>2</sup>
- But even in complete remission, children might have remaining traces of disease in their blood. This is called **minimal residual disease**<sup>4</sup>
- Sometimes cancer cells or signs and symptoms of cancer can return. This is called a **relapse**<sup>2</sup>
- Or a child may be treated and never reach remission. In this case, the cancer is called **refractory** disease<sup>2</sup>

### IMPORTANT SAFETY INFORMATION

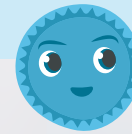
- **BLINCYTO® may cause serious side effects that can be severe, life-threatening, or lead to death, including (continued):**
  - **Neurologic problems.** Symptoms of neurologic problems may include: seizures, difficulty in speaking or slurred speech, loss of consciousness, trouble sleeping, confusion and disorientation, loss of balance, headache, difficulty with facial movements, hearing, vision, or swallowing, and tremors.
- Your health care provider will check for these problems during treatment with BLINCYTO®. Your health care provider may temporarily or completely stop your treatment with BLINCYTO® if you have severe side effects.

### Who should not receive BLINCYTO®?

- Do not receive BLINCYTO® if you are allergic to blinatumomab or to any of the ingredients of BLINCYTO®.



Show your  
child how  
BLINCYTO®  
works on  
**page 12**



## What is BLINCYTO®?

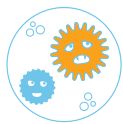
BLINCYTO® is a prescription medicine used to treat B-cell precursor **ALL** in adults and children. It is an **immunotherapy**, not a **chemotherapy**.<sup>1</sup> An immunotherapy is a type of treatment that works with the body's own immune system to fight cancer.<sup>2</sup>

### How BLINCYTO® fights cancer



#### Infusion

BLINCYTO® is given by a continuous **infusion** into the vein. The medicine is designed to work with your immune system to fight cancer.<sup>1,2</sup>



#### Find

There are healthy immune cells and cancer cells in your body. The cancer cells can hide from the healthy immune cells. BLINCYTO® helps the healthy immune cells find the cancer cells.<sup>1-3</sup>



#### Engage

Now the healthy immune cell connects to the cancer cell. Once they are together, the healthy immune cell can help fight the cancer cell.<sup>1,2</sup>

After your child has received chemotherapy, BLINCYTO® can be started right away<sup>1,5</sup>

### IMPORTANT SAFETY INFORMATION

**Before receiving BLINCYTO®, tell your health care provider about all of your medical conditions, including if you or your child:**

- have a history of neurological problems, such as seizures, confusion, trouble speaking or loss of balance
- have an infection
- have ever had an infusion reaction after receiving BLINCYTO® or other medications
- have a history of radiation treatment to the brain, or chemotherapy treatment
- are scheduled to receive a vaccine. You should not receive a "live vaccine" within 2 weeks before you start treatment with BLINCYTO®, during treatment, and until your immune system recovers after you receive your last cycle of BLINCYTO®. If you are not sure about the type of vaccine, ask your health care provider.

4 Please see additional Important Safety Information for BLINCYTO® on pages 13–14.

 **BLINCYTO**  
(blinatumomab) for  
injection  
35 mcg single-dose vial



# BLINCYTO<sup>®</sup> can help those who have MRD

Cancer can often hide from treatments, making it hard to get rid of all cancer cells. Even after reaching **remission** with chemotherapy, a relatively small number of cancer cells can remain in your body. This is called minimal residual disease, or **MRD**. If a test detects these remaining cancer cells, you have tested **MRD(+)**.<sup>4,6</sup>

BLINCYTO<sup>®</sup> is the first and only treatment for **MRD(+)** ALL. It can be used in children and adults.<sup>1,7</sup>

## The goal is to be MRD(-)<sup>1</sup>

In a study of 86 adults who tested **MRD(+)** after **chemotherapy** and were treated with BLINCYTO<sup>®</sup><sup>1</sup>

**8 out of 10** (81%) had no detectable cancer after 4 weeks<sup>1,\*†</sup>



More than half were able to go on to transplant.<sup>1,‡</sup>

In the study, BLINCYTO<sup>®</sup> helped most people become MRD(-)<sup>1,§</sup>

\*Adults studied had at least 3 rounds of chemotherapy prior to treatment with BLINCYTO<sup>®</sup>. They were in complete remission either for the first or second time. Remission is a response to treatment where signs of cancer have disappeared, but this does not always mean the cancer is cured.<sup>1</sup>

†One cycle of treatment with BLINCYTO<sup>®</sup> consists of four weeks of treatment followed by two weeks without treatment.<sup>1</sup>

‡59 out of 86 patients treated with BLINCYTO<sup>®</sup> in the study proceeded to a stem cell transplant.<sup>1</sup>

§As measured by a test that can detect 1 cancer cell out of 10,000 cells in the bone marrow.<sup>1</sup> (More sensitive testing methods may be able to detect lower levels of cancer cells.)<sup>4</sup>

### IMPORTANT SAFETY INFORMATION

**Before receiving BLINCYTO<sup>®</sup>, tell your health care provider about all of your medical conditions, including if you or your child (continued):**

- are pregnant or plan to become pregnant. BLINCYTO<sup>®</sup> may harm your unborn baby. Tell your health care provider if you become pregnant during treatment with BLINCYTO<sup>®</sup>.
  - If you are able to become pregnant, your health care provider should do a pregnancy test before you start treatment with BLINCYTO<sup>®</sup>.
  - Females who are able to become pregnant should use an effective form of birth control during treatment with BLINCYTO<sup>®</sup>, and for 48 hours after your last dose of BLINCYTO<sup>®</sup>.
- are breastfeeding or plan to breastfeed. It is not known if BLINCYTO<sup>®</sup> passes into your breast milk. You should not breastfeed during treatment with BLINCYTO<sup>®</sup> and for 48 hours after your last dose.

Tell your health care provider about all the medicines you take, including prescription and over-the-counter medicines, vitamins, and herbal supplements.



## BLINCYTO<sup>®</sup> can help children with ALL

When cancer returns after a period of **remission**, this is called a **relapse**. When cancer does not respond to treatment, this is called **refractory** disease.<sup>2</sup>

In a study of 70 children (ranging in age from 7 months to 17 years) with relapsed or refractory B-cell precursor **ALL**:<sup>1,\*</sup>



Complete response means there were no signs of cancer after treatment and certain blood counts fully or partially recovered to normal within the first 2 treatment cycles.<sup>1,2</sup>

\*Some people had more than one relapse before the study. Others may have had a relapse following a stem cell transplantation prior to getting BLINCYTO<sup>®</sup>, or for some their cancer may have been refractory to other treatments.<sup>1</sup>

### IMPORTANT SAFETY INFORMATION

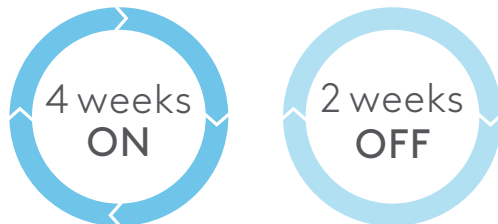
#### What should I avoid while receiving BLINCYTO<sup>®</sup>?

- Do not drive, operate heavy machinery, or do other dangerous activities while you are receiving BLINCYTO<sup>®</sup> because BLINCYTO<sup>®</sup> can cause neurological symptoms such as dizziness, seizures, and confusion.



## How your child will receive BLINCYTO®

BLINCYTO® is given by a continuous **intravenous (IV) infusion**. This means the medicine goes into your child's vein and then goes into the blood. The dosing of BLINCYTO® occurs in cycles. Here's how a cycle works:<sup>1</sup>



One cycle is 4 weeks of infusion followed by 2 weeks without infusion<sup>1</sup>

In studies of BLINCYTO®, most people got 1 or 2 cycles.<sup>1,8</sup> Your child's doctor will decide how long your child will need to stay on treatment. Your child will be given BLINCYTO® on one or more of the following time intervals:<sup>1</sup>



### IMPORTANT SAFETY INFORMATION

BLINCYTO® may cause serious side effects, including:

- **Infections.** BLINCYTO® may cause life-threatening infections that may lead to death. Tell your health care provider right away in case you develop any signs or symptoms of an infection.
- **Tumor Lysis Syndrome (TLS).** TLS is caused by the fast breakdown of cancer cells. TLS can be life-threatening and may lead to death. Tell your healthcare provider right away if you have any symptoms of TLS during treatment with BLINCYTO, including: nausea and vomiting, confusion, shortness of breath, irregular heartbeat, dark or cloudy urine, reduced amount of urine, unusual tiredness, muscle cramps.

7 Please see additional Important Safety Information for BLINCYTO® on pages 13–14.

# What to expect when your child starts BLINCYTO®



BLINCYTO® treatment starts in the hospital to make sure that it is safe for your child and to watch for any side effects that may occur.<sup>1,9</sup>

- Your child will be given a medicine to help reduce the likelihood of **infusion** reactions, which are common with medicines like BLINCYTO®
- Your child will be monitored and treated for any serious reactions to BLINCYTO® if they happen



After the hospital stay, your child will continue BLINCYTO® with a small portable pump. The medicine will need to be refilled every 1–7 days by a healthcare professional. Depending on frequency of refills, your child's doctor will decide if your child can get the rest of their treatment at home. Or your doctor may refer your child to an outpatient clinic or an infusion center to manage treatment.<sup>1</sup>

## Receiving BLINCYTO® at home

If it feels overwhelming to receive BLINCYTO® away from the hospital, try not to worry. Your child's healthcare team may be able to help you. They will make sure you and your child are prepared. Here are some ways to ensure your child's safety and feel confident when your child gets BLINCYTO® at home:



Talk to your child's healthcare provider about whether your child's IV bag will be changed at an outpatient center or by a home healthcare provider



Call your child's doctor if your child experiences any problems or side effects



Do not change the settings on your child's pump, even if the alarm sounds. Any setting changes may cause a dose error



If there are any problems with your child's pump, or the pump alarm sounds, contact your child's healthcare provider immediately



Keep BLINCYTO® and all medicines out of the reach of other children in the household

Your healthcare provider will explain how to store and dispose of BLINCYTO® and used supplies

### IMPORTANT SAFETY INFORMATION

BLINCYTO® may cause serious side effects, including (continued):

- **Low white blood cell counts (neutropenia).** Neutropenia is common with BLINCYTO® treatment and may sometimes be life-threatening. Low white blood cell counts can increase your risk of infection. Your health care provider will do blood tests to check your white blood cell counts during treatment with BLINCYTO®. Tell your health care provider right away if you get a fever.
- **Abnormal liver blood test.** Your health care provider will do blood tests to check your liver before you start BLINCYTO® and during treatment with BLINCYTO®.
- **Inflammation of the pancreas (pancreatitis).** Pancreatitis may happen in patients treated with BLINCYTO® and corticosteroids. It may be severe and lead to death. Tell your health care provider right away if you have severe stomach-area pain that does not go away. The pain may happen with or without nausea and vomiting.
- Your health care provider will do blood tests during treatment to check for side effects.



# Possible side effects<sup>9</sup>

BLINCYTO<sup>®</sup> may cause serious side effects that can be severe, life-threatening, or may even lead to death. These include: cytokine release syndrome (CRS), infusion reactions, and neurologic problems.

## Symptoms of CRS and infusion reactions may include:

- Fever
- Tiredness or weakness
- Dizziness
- Headache
- Low blood pressure
- Nausea
- Vomiting
- Chills
- Face swelling
- Wheezing or trouble breathing
- Skin rash

## Symptoms of neurologic problems may include:

- Seizures
- Difficulty in speaking or slurred speech
- Loss of consciousness
- Trouble sleeping
- Confusion and disorientation
- Loss of balance
- Headache
- Difficulty with facial movements, hearing, vision, or swallowing

## The most common side effects of BLINCYTO<sup>®</sup> include:

- Fever
- Reactions related to infusion of the medicine such as face swelling, low blood pressure, and high blood pressure (infusion-related reactions)
- Infections
- Headache
- Low red blood cell count (anemia)
- Low white blood cell count (neutropenia)
- Low platelet count (thrombocytopenia)

## BLINCYTO<sup>®</sup> may cause the following serious side effects:

- Infections
- Tumor Lysis Syndrome (TLS)
- Low white blood cell counts (neutropenia)
- Abnormal liver blood test
- Inflammation of the pancreas (pancreatitis)

These are not all the possible side effects of BLINCYTO<sup>®</sup>.

Call your health care provider for medical advice about side effects. You may report side effects to FDA at 1-800-FDA-1088.

Tell your child's healthcare provider right away if your child develops an infection or fever, or if they develop any other side effects that do not go away

Please read the accompanying Medication Guide before you or your child receives BLINCYTO<sup>®</sup> and before each BLINCYTO<sup>®</sup> infusion and discuss it with your doctor.



## Resources for you and your child

**Doctor discussion guide:** This guide will help you talk to your child's doctor about BLINCYTO®. It contains a list of FAQs.

**Leaving the hospital contact sheet:** Fill out this form when your child leaves the hospital to help you when you continue BLINCYTO® at home. It contains important contacts and additional information.

**Treatment calendar:** This calendar helps keep track of scheduled appointments and bag changes.

**Medical information card:** Fill out this medical information card. You can keep your child's important healthcare contact information in one place here.

Go to [www.blinicyto.com](http://www.blinicyto.com) to download these helpful tools.

FAQ, frequently asked question.

### IMPORTANT SAFETY INFORMATION

What is the most important information I should know about BLINCYTO®?

- Call your health care provider or get emergency medical help right away if you get any of the symptoms listed below:
  - BLINCYTO® may cause serious side effects that can be severe, life-threatening, or lead to death, including:
    - **Cytokine Release Syndrome (CRS) and infusion reactions.** Symptoms of CRS and infusion reactions may include: fever, tiredness or weakness, dizziness, headache, low blood pressure, nausea, vomiting, chills, face swelling, wheezing or trouble breathing, and skin rash.
    - **Neurologic problems.** Symptoms of neurologic problems may include: seizures, difficulty in speaking or slurred speech, loss of consciousness, trouble sleeping, confusion and disorientation, loss of balance, headache, difficulty with facial movements, hearing, vision, or swallowing, and tremors.
  - Your health care provider will check for these problems during treatment with BLINCYTO®. Your health care provider may temporarily or completely stop your treatment with BLINCYTO® if you have severe side effects.

10 Please see additional Important Safety Information for BLINCYTO® on pages 13–14.

 **BLINCYTO**  
(blinatumomab) for injection  
35 mcg single-dose vial

# With personalized solutions, Amgen SupportPlus is here to help

**AMGEN** Support<sup>+</sup>



## Amgen® Nurse Partners\*

Dedicated Amgen Nurse Partners will be with you along the way to offer supplemental support and information about resources to help you access your prescribed Amgen medication.



## Financial Support

Every patient has unique needs. Amgen SupportPlus is here to provide financial support information and resources, regardless of your current financial situation or the type of insurance you have.



## Amgen SupportPlus

CALL 866-264-2778 Monday to Friday, 9:00 am to 8:00 pm ET, or visit [www.AmgenSupportPlus.com](http://www.AmgenSupportPlus.com) to learn how Amgen can help.

- For those with English as a second language, Amgen Nurse Partners are able to connect you with a personal interpreter to help

\*Resources include referrals to independent nonprofit patient assistance programs. Eligibility for resources provided by independent nonprofit patient assistance programs is based on the nonprofits' criteria. Amgen has no control over these programs and provides referrals as a courtesy only.

†Amgen Nurse Partners are only available to patients that are prescribed certain products. Nurse Partners are there to support, not replace, your treatment plan and do not provide medical advice or case management services. You should always consult your healthcare provider regarding medical decisions or treatment concerns.

## Your care team

Healthcare providers may be only one part of you and your child's support network. Your loved ones will be a huge help on your child's treatment journey.

Friends and family want to be there for you and your child but may not know how. Let them know it's okay to ask questions and check in with you. And remember, you can ask for help, too. They are there for you.

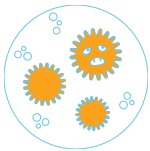
In addition to your child's personal caregivers, there are patient support groups that can provide invaluable support throughout the treatment process, such as:

- The American Childhood Cancer Organization at [acco.org](http://acco.org)
- The Children's Oncology Group at [childrensoncologygroup.org](http://childrensoncologygroup.org)
- The Leukemia & Lymphoma Society at [lls.org](http://lls.org)
- Stupid Cancer at [stupidcancer.org](http://stupidcancer.org)

These third-party resources are for your information only. Amgen does not endorse and is not responsible for the content included in these resources.



## Talking together about BLINCYTO®



### Why am I sick?

You have a type of sickness, called cancer, in your blood and your bone marrow. There are a lot of different cells in your blood. Some are healthy, but other cells can become sick and are called cancer cells. The number of cancer cells can grow and cause problems for the healthy immune cells.<sup>2,3</sup>



### What is BLINCYTO®?

BLINCYTO® is a medicine that can help you get better. It works with the cells in your body. BLINCYTO® helps your healthy immune cells find the cancer cells so they can get rid of them.<sup>1,2</sup>



### How does BLINCYTO® work?

BLINCYTO® comes in a bag. It will be connected to you with a tube and needle. You will be taking BLINCYTO® for 4 weeks. Then you will go off of it for 2 weeks.<sup>1,2</sup>



### Can I be at home?

You will start BLINCYTO® in the hospital because your doctor wants to make sure you are safe. Your doctor may decide that you can continue BLINCYTO® at home. If your doctor decides this, you will learn about what happens next from your doctor, and it's possible a nurse may come to help you with your medicine.<sup>1,9</sup>

## IMPORTANT SAFETY INFORMATION

### Who should not receive BLINCYTO®?

- Do not receive BLINCYTO® if you are allergic to blinatumomab or to any of the ingredients of BLINCYTO®.

12 Please see additional Important Safety Information for BLINCYTO® on pages 13–14.

 **BLINCYTO**  
(blinatumomab) for injection  
35 mcg single-dose vial

## WHAT IS BLINCYTO® (blinatumomab)?

BLINCYTO® is a prescription medicine used to treat adults and children with:

- B-cell precursor acute lymphoblastic leukemia (ALL) in remission when only a small number of cancer cells remain in the body (minimal residual disease)
- B-cell precursor ALL that has come back or did not respond to previous treatments

ALL is a cancer of the blood in which a particular kind of white blood cell is growing out of control.

## IMPORTANT SAFETY INFORMATION

### What is the most important information I should know about BLINCYTO®?

- **Call your health care provider or get emergency medical help right away if you get any of the symptoms listed below:**
  - **BLINCYTO® may cause serious side effects that can be severe, life-threatening, or lead to death, including:**
    - **Cytokine Release Syndrome (CRS) and infusion reactions.** Symptoms of CRS and infusion reactions may include: fever, tiredness or weakness, dizziness, headache, low blood pressure, nausea, vomiting, chills, face swelling, wheezing or trouble breathing, and skin rash.
    - **Neurologic problems.** Symptoms of neurologic problems may include: seizures, difficulty in speaking or slurred speech, loss of consciousness, trouble sleeping, confusion and disorientation, loss of balance, headache, difficulty with facial movements, hearing, vision, or swallowing, and tremors.
  - Your health care provider will check for these problems during treatment with BLINCYTO®. Your health care provider may temporarily or completely stop your treatment with BLINCYTO® if you have severe side effects.

### Who should not receive BLINCYTO®?

- Do not receive BLINCYTO® if you are allergic to blinatumomab or to any of the ingredients of BLINCYTO®.

### Before receiving BLINCYTO®, tell your health care provider about all of your medical conditions, including if you or your child:

- have a history of neurological problems, such as seizures, confusion, trouble speaking or loss of balance
- have an infection
- have ever had an infusion reaction after receiving BLINCYTO® or other medications
- have a history of radiation treatment to the brain, or chemotherapy treatment
- are scheduled to receive a vaccine. You should not receive a “live vaccine” within 2 weeks before you start treatment with BLINCYTO®, during treatment, and until your immune system recovers after you receive your last cycle of BLINCYTO®. If you are not sure about the type of vaccine, ask your health care provider.
- are pregnant or plan to become pregnant. BLINCYTO® may harm your unborn baby. Tell your health care provider if you become pregnant during treatment with BLINCYTO®.
  - If you are able to become pregnant, your health care provider should do a pregnancy test before you start treatment with BLINCYTO®.
  - Females who are able to become pregnant should use an effective form of birth control during treatment with BLINCYTO®, and for 48 hours after your last dose of BLINCYTO®.
- are breastfeeding or plan to breastfeed. It is not known if BLINCYTO® passes into your breast milk. You should not breastfeed during treatment with BLINCYTO® and for 48 hours after your last dose.

**Tell your health care provider about all the medicines you take,** including prescription and over-the-counter medicines, vitamins, and herbal supplements.

### What should I avoid while receiving BLINCYTO®?

- Do not drive, operate heavy machinery, or do other dangerous activities while you are receiving BLINCYTO® because BLINCYTO® can cause neurological symptoms such as dizziness, seizures, and confusion.

## IMPORTANT SAFETY INFORMATION (cont'd)

- **BLINCYTO® may cause serious side effects, including:**
  - **Infections.** BLINCYTO® may cause life-threatening infections that may lead to death. Tell your health care provider right away in case you develop any signs or symptoms of an infection.
  - **Tumor Lysis Syndrome (TLS).** TLS is caused by the fast breakdown of cancer cells. TLS can be life-threatening and may lead to death. Tell your healthcare provider right away if you have any symptoms of TLS during treatment with BLINCYTO, including: nausea and vomiting, confusion, shortness of breath, irregular heartbeat, dark or cloudy urine, reduced amount of urine, unusual tiredness, muscle cramps.
  - **Low white blood cell counts (neutropenia).** Neutropenia is common with BLINCYTO® treatment and may sometimes be life-threatening. Low white blood cell counts can increase your risk of infection. Your health care provider will do blood tests to check your white blood cell counts during treatment with BLINCYTO®. Tell your health care provider right away if you get a fever.
  - **Abnormal liver blood test.** Your health care provider will do blood tests to check your liver before you start BLINCYTO® and during treatment with BLINCYTO®.
  - **Inflammation of the pancreas (pancreatitis).** Pancreatitis may happen in patients treated with BLINCYTO® and corticosteroids. It may be severe and lead to death. Tell your health care provider right away if you have severe stomach-area pain that does not go away. The pain may happen with or without nausea and vomiting.

- Your health care provider will do blood tests during treatment to check for side effects.

### The most common side effects

- The most common side effects of BLINCYTO® include:
  - Fever
  - Reactions related to infusion of the medicine such as face swelling, low blood pressure, and high blood pressure (infusion-related reactions)
  - Infections
  - Headache
  - Low red blood cell count (anemia)
  - Low white blood cell count (neutropenia)
  - Low platelet count (thrombocytopenia)

These are not all the possible side effects of BLINCYTO®.

Call your health care provider for medical advice about side effects. You may report side effects to FDA at 1-800-FDA-1088.

Please read the accompanying Medication Guide before you or your child receives BLINCYTO® and before each BLINCYTO® infusion and discuss it with your doctor.

**Please see BLINCYTO® full Prescribing Information, including **BOXED WARNINGS** and Medication Guide, or visit [Blinicyto.com](http://Blinicyto.com).**



## Glossary<sup>2,4</sup>

**Acute lymphoblastic leukemia (ALL):** ALL is a type of cancer of the blood and bone marrow that affects white blood cells.

**Chemotherapy:** A treatment that uses chemical drugs to stop the replication of cancer cells, either by killing the cells or by stopping them from dividing. It is often called “chemo.”

**Immunotherapy:** A type of medicine that uses your body’s own immune system to help fight conditions such as cancer.

**Infusion:** A method of putting fluids, including drugs, into the bloodstream. It is also called “intravenous infusion.”

**Intravenous (IV):** A way of giving a drug through a needle into a vein.

**Minimal residual disease (MRD):** A relatively small number of cancer cells that remain in the body after treatment and that cannot be detected by traditional diagnostic techniques.

**Refractory:** When a disease does not respond to treatment. It may be resistant at the beginning of treatment or it may become resistant during treatment.

**Relapse:** The return of a disease or the signs and symptoms of a disease after a period of improvement.

**Remission:** A response to treatment where signs of cancer have decreased or disappeared. This does not always mean that the cancer has been cured.



**References:** 1. BLINCYTO® (blinatumomab) prescribing information, Amgen. 2. National Cancer Institute. NCI Dictionary of Cancer Terms. <https://www.cancer.gov/publications/dictionaries/cancer-terms>. Accessed July 03, 2023. 3. Children’s Hospital of Philadelphia. Acute Lymphoblastic Leukemia (ALL). <https://www.chop.edu/conditions-diseases/acute-lymphoblastic-leukemia-all>. Accessed July 03, 2023. 4. Brüggemann M, Gökbuget N, Kneba M. Acute lymphoblastic leukemia: monitoring minimal residual disease as a therapeutic principle. *Semin Oncol.* 2012;39:47-57. 5. Frankel SR, Baeuerle PA. Targeting T cells to tumor cells using bispecific antibodies. *Curr Opin Chem Biol.* 2013;17:385-392. 6. Ventola CL. Cancer immunotherapy, part 3: challenges and future trends. *PT.* 2017;42:514-521. 7. Food and Drug Administration. FDA expands approval of Blincyto for treatment of a type of leukemia in patients who have a certain risk factor for relapse. <https://www.fda.gov/NewsEvents/Newsroom/PressAnnouncements/ucm603151.htm>. Accessed July 03, 2023. 8. Gökbuget N, Dombret H, Bonifacio M, et al. Blinatumomab for minimal residual disease in adults with B-cell precursor acute lymphoblastic leukemia. *Blood.* 2018;131:1522-1531. 9. BLINCYTO® (blinatumomab) medication guide, Amgen.

Please see BLINCYTO® full Prescribing Information, including **BOXED WARNINGS** and Medication Guide, or visit [Blinicyto.com](https://www.blinicyto.com).



BLINCYTO® is a registered trademark of Amgen Inc.  
© 2023 Amgen Inc. All rights reserved.  
USA-103-81352 07/23

